

2026

# ALIGN-T1D

*The Alliance for Integrated, Government-led  
Networks for T1D*

**Expression of Interest (EOI) Dissemination  
Webinar**

# Instructions to turn on live translation

- 1 Click the Globe Icon**  
Locate the Interpretation (globe) icon in the bottom Zoom toolbar.  
On phone/tablet, click "... More" first.
- 2 Select Your Language**  
Choose your preferred language channel (e.g., Spanish, French, English).
- 3 Optional: Mute Original Audio**  
To hear only the interpreter, reopen the Interpretation menu and select "Mute Original Audio."



# Agenda

- 1 Welcome and objectives
- 2 Introduction to ALIGN-T1D
- 3 Overview of the EOI call and eligibility
- 4 Funding Scope
- 5 What makes a strong EOI
- 6 Government leadership and partner engagement
- 7 Review and selection process
- 8 Submission and timelines
- 9 Q&A

# Content

## 1. Welcome and objectives

2. Introduction to ALIGN-T1D

3. Overview of the EOI call and eligibility

4. Funding scope

5. What makes a strong EOI

6. Government leadership and partner engagement

7. Review and selection process

8. Submission and timelines

9. Q&A

# Welcome and objectives

## ✓ WE WILL COVER

- Overview of ALIGN-T1D
- EOI requirements and what makes a strong submission
- Funding scope
- Government leadership and partner roles
- The review and shortlisting process
- Submission logistics and timelines

## ✗ WE WILL NOT COVER

- Country-specific strategic advice
- Assessment of the competitiveness of any individual applicant

## ⚙️ WEBINAR LOGISTICS

- Live translation to French and Spanish available
- Drop questions in the chat any time during the session
- Dedicated Q&A at the end
- Responses to all questions asked will be compiled and posted on a live FAQ document on the [ALIGN-T1D website](#) under “EOI”

# Content

1. Welcome and objectives

**2. Introduction to ALIGN-T1D**

3. Overview of the EOI call and eligibility

4. Funding scope

5. What makes a strong EOI

6. Government leadership and partner engagement

7. Review and selection process

8. Submission and timelines

9. Q&A

## The Challenge:

By 2040, yearly new T1D cases are projected to increase by **over 50%**, with people in low-and-middle-income countries (LMICs) **accounting for 75%** of the burden and facing deadly challenges



People living with **T1D in LMICs lose 40 years of life** vs. those in high-income countries (HICs), due to limited access to diagnosis, insulin, monitoring, education, comprehensive care and follow-up



**50% of healthy years lost by people living with T1D in LMICs** due to lack of access to insulin and monitoring

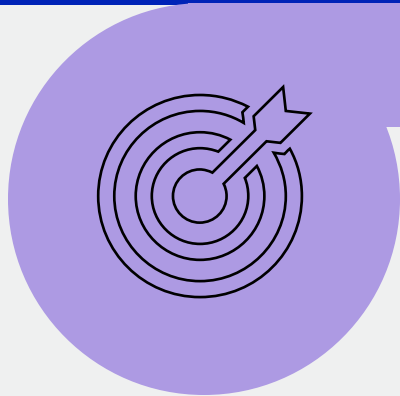


**Significant resources invested** to address these disparities, but efforts lack coordination, with opportunities for more **collective & sustainable impact**

A world where diagnosis, insulin, monitoring, education, and diabetes care are available to all - ensuring people living with T1D can lead full, productive lives



**VISION: An Alliance to enhance equitable access**

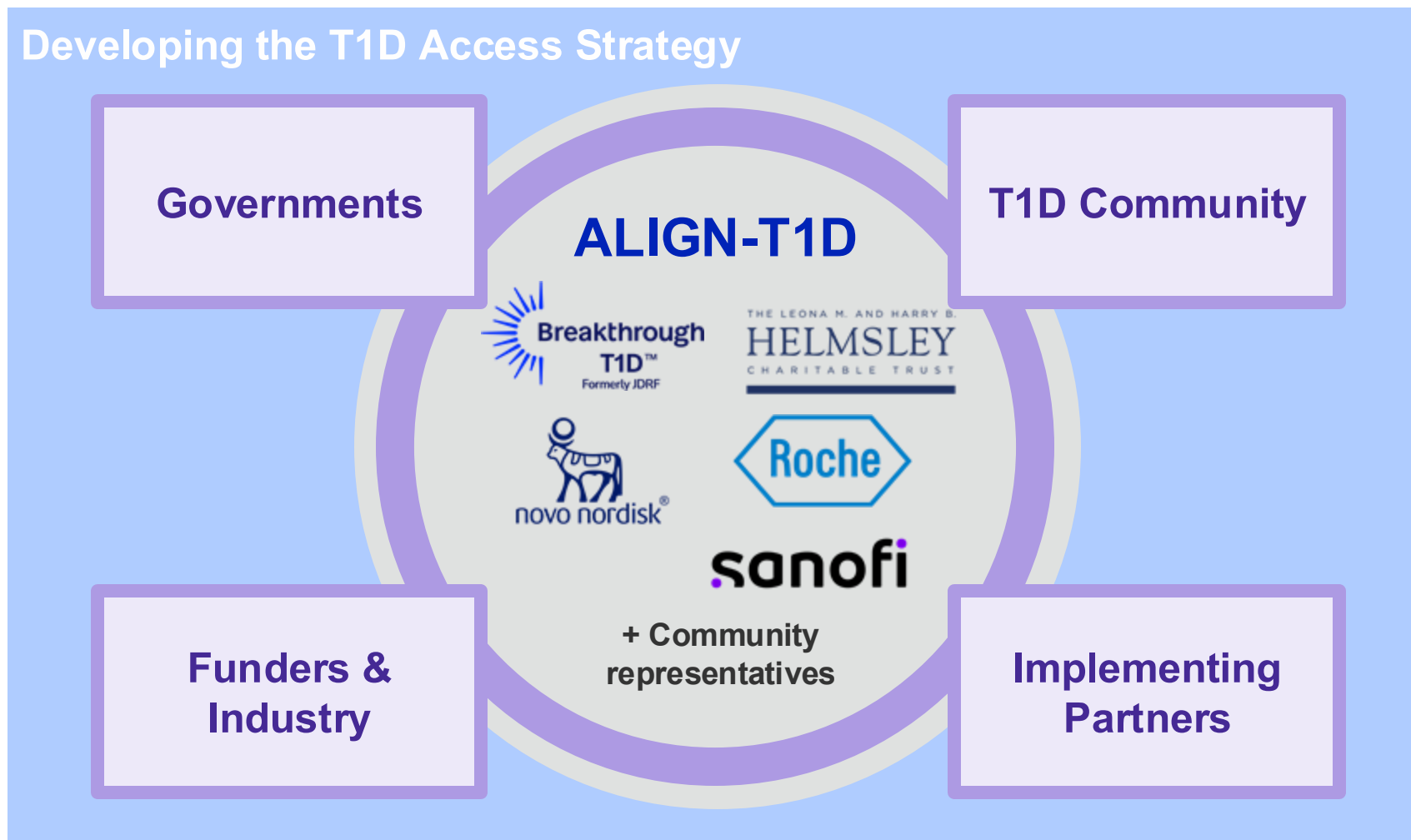


**MISSION: Government & community-led integrated approach**

To engage with governments and communities in LMICs to sustainably enhance access for people living with T1D through integrated NCD approaches and to optimize and mobilize funding towards government- and community-defined priorities

# Our Approach

Changing the status quo of T1D care in LMICs requires meaningful collaboration across the entire ecosystem



# Our Scope | Key Objectives

ALIGN-T1D's Access Strategy is underpinned by five key objectives informed by consultations with 80+ in-country and global stakeholders



Strengthen integrated T1D service delivery



Enhance insulin, monitoring and other supplies access



Support enabling health systems



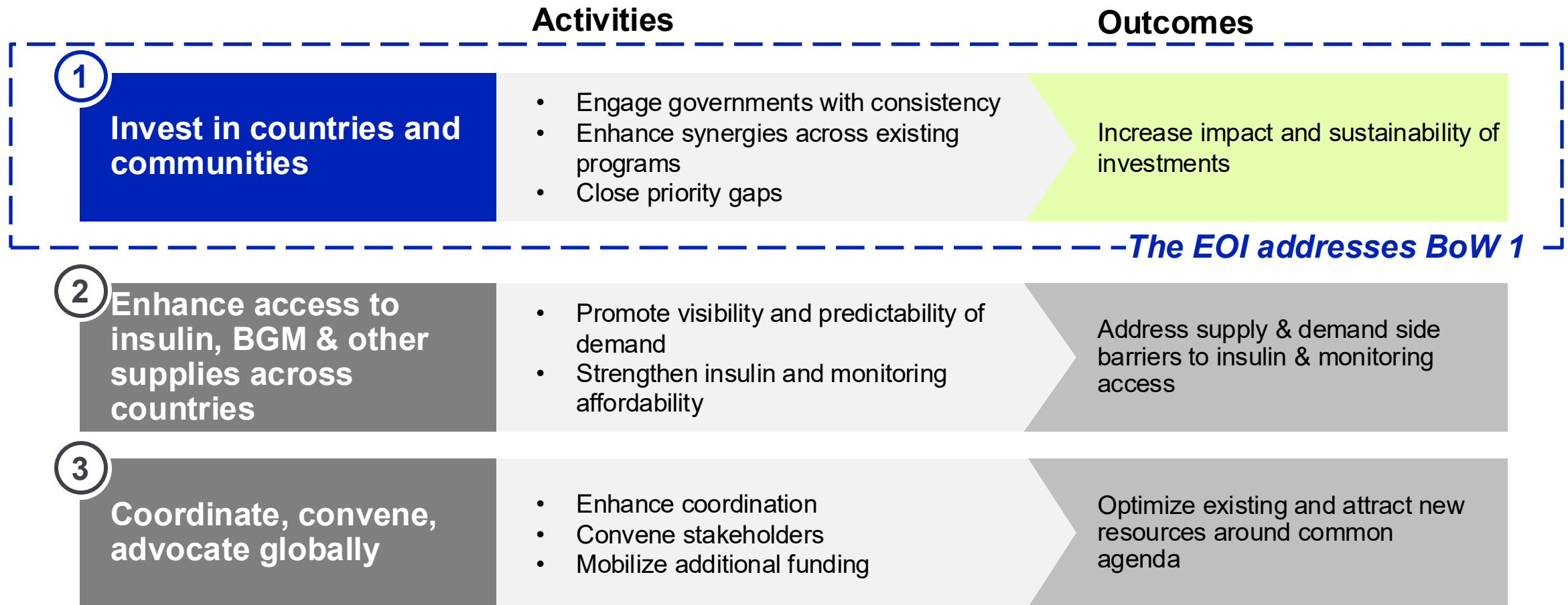
Amplify role of T1D communities



Mobilize stakeholders and funding

# Our Scope | Bodies of Work

ALIGN-T1D is scoped into three core bodies of work



# ALIGN-T1D Startup Phase | The Work Underway

**ALIGN-T1D is currently in its “Startup” phase, with our work being piloted in several countries**

Work in these countries are at varying levels of development

**Countries selected through the EOI process will be a part of ALIGN-T1D’s “Scale Up” phase**

We have already begun incorporating lessons from our startup countries into our design for Scale Up. Countries selected for Scale Up should expect access to continued learnings and adjustments based on feedback and best practices from our Startup countries, as appropriate

# Content

1. Welcome and objectives
2. Introduction to ALIGN-T1D
- 3. Overview of the EOI call and eligibility**
4. Funding scope
5. What makes a strong EOI
6. Government leadership and partner engagement
7. Review and selection process
8. Submission and timelines
9. Q&A

# ALIGN-T1D is inviting 11 eligible countries to submit an Expression of Interest (EOI)

*ALIGN-T1D seeks to collaborate with Ministries of Health\* to strengthen health systems and scale sustainable approaches to integrated access to T1D care*

## What is an Expression of Interest?

### WHAT IT IS

#### A signal of demand & intent

- A formal signal of interest and rationale from eligible Ministries of Health\* to collaborate with ALIGN-T1D
- A short, structured submission to help ALIGN-T1D understand country context, momentum, and partner ecosystem
- A first but essential step. EOI submissions evaluated competitively to determine which countries are invited to submit a full proposal
- Government-owned; Ministry of Health\* must be applicant

### WHAT IT IS NOT

#### A funding application

- Not a detailed proposal or concept note
- Not a guarantee from ALIGN-T1D to provide financial support
- Not a complex or lengthy process
- Not open to all countries
- Not implementer-led; partners may support but cannot be primary submitter

\*Or equivalent government authority at national or regional level

# Overview of EOI

**PURPOSE** To enable countries to formally **express interest** for ALIGN-T1D funding to strengthen access to T1D care through integrated NCD approaches for sustainable impact. **One EOI submission per country.**

## OBJECTIVES

**Raise awareness of ALIGN-T1D**

**Understand country interest and readiness**

**Identify countries for next-stage proposals**

**Encourage stakeholder coordination**

## GUIDING PRINCIPLES

**Country-driven**  
MOH-led, developed through a consultative process with partners

**Focus on sustainability**  
Prioritize long-term domestic ownership and fiscal sustainability

**Light-touch submission**  
Structured and concise, not a full proposal or concept note

**Fair and objective review**  
Information requested will enable fair and objective evaluation

# Countries eligible to submit EOI

11 LMICs with expanded partner presence considering geographic and linguistic diversity and expressed interest in addressing NCDs

Region	Country*
Northern Africa	Morocco
East & Southern Africa	Kenya
	Tanzania
	Zambia
West Africa	Benin
	Ghana
	Nigeria
South Asia	Bangladesh
Southeast Asia & Pacific	Cambodia
	Philippines
Latin America & Caribbean	Peru

\*Only these 11 countries eligible to apply at this stage. There may be further calls for other countries in the future. Countries not eligible or missing application window, may be considered in a future call. The EOI may be built around the entire country or selected region based on context, need and feasibility.

# Content

1. Welcome and objectives
2. Introduction to ALIGN-T1D
3. Overview of the EOI call and eligibility
- 4. Funding scope**
5. What makes a strong EOI
6. Government leadership and partner engagement
7. Review and selection process
8. Submission and timelines
9. Q&A

# Scope of ALIGN-T1D Funding Support



## Funding envelope

- **\$1-1.5 million** annually per selected country or geography
- Applicants should indicate priorities across two ranges in the EOI **\$1 -1.5 M** and **\$1.5 - 2M annually**



## Grant duration

- Initial **three-year grant** cycle, with renewable multi-year cycles, aligned to ALIGN-T1D strategic objectives
- Funding release latest in **June 2027**



## Geographic scope

- Implementation may be **national or sub-national** in scope
- **MOH determines most appropriate geographic focus** (e.g. state, region) based on context, need and feasibility

### Please note:

- Funding can be used to address gaps in both T1D and broader NCDs
- While MOH leads strategy and coordination, they can not be a direct recipient of funds. They may be eligible to receive funds as a sub-recipient.
- Grant agreements will be signed with implementing partners following a competitive proposal stage

# Scope of ALIGN-T1D Funding Support (cont.)

EOI should identify opportunities to...

## Strengthen existing funded programs

*Improve coordination and collaboration across already-funded initiatives in-country*



## Fund new interventions

*Strengthen access to T1D care through integrated NCD approaches using new interventions.*

DELIVERED ACROSS FOUR OBJECTIVES



### Integrated T1D service delivery

- Develop and adopt national guidelines
- Build healthcare provider capacity across health system levels
- Ensure health facilities prioritize diabetes commodities
- ...



### Insulin, Monitoring & Other Supplies

- Include essential commodities in NML/NDL
- Strengthen quant., financing & supply chains
- Simplify registration & reduce in-country mark-ups
- ...



### Enabling Health systems

- Include T1D in national NCD strategy, operational plans
- Strengthen data and integrate into DHIS
- Ensure T1D/diabetes/NCDs covered in financial protection schemes
- ...



### Amplifying Communities

- Identify, and extend reach of T1D community networks
- Raise community awareness
- Ensure HCP referrals
- Support and strengthen strategic advocacy
- ...

# Content

1. Welcome and objectives
2. Introduction to ALIGN-T1D
3. Overview of the EOI call and eligibility
4. Funding scope
- 5. What makes a strong EOI**
6. Government leadership and partner engagement
7. Review and selection process
8. Submission and timelines
9. Q&A

# What makes a strong EOI?

Reviewers will assess **five criteria** prioritizing **credibility and logic** over perfect data

1

## Clear articulation of need (20 pts)

Describe unmet T1D burden and equity gaps clearly. Where data are limited, acknowledge it; credible logic is valued over precise numbers.

2

## Demonstrated government leadership (25 pts)

Show policy signals and MOH ownership. A plausible trajectory toward long-term sustainability matters more than firm commitments.

3

## Alignment with national priorities (20 pts)

Locate your EOI within existing national plans. ALIGN-T1D funding should accelerate momentum, not operate as a standalone project.

4

## Evidence of partner coordination (15 pts)

A credible, diverse ecosystem matters more than a long list. Include local actors and people with lived T1D experience. Clarity of roles is key.

5

## Realistic scope (20 pts)

Priorities should be feasible within a 3-year horizon and the stated budget brackets. Detailed plans are not required, but key risks should be identified

**Remember:** This is not a full technical assessment. Reviewers will look for internal logic, coherence and acknowledgement of limitations. Settings with limited data but strong equity reasoning will not be penalized

# Content

1. Welcome and objectives
2. Introduction to ALIGN-T1D
3. Overview of the EOI call and eligibility
4. Funding scope
5. What makes a strong EOI
- 6. Government leadership and partner engagement**
7. Review and selection process
8. Submission and timelines
9. Q&A

# Government Leadership and Partner Engagement

A comprehensive approach is the strongest signals of a country's readiness

## GOVERNMENT LEADERSHIP

- **Ministry of Health must lead.\*** Submitted by MOH reflecting genuine ownership, not just endorsement. Partners may support in coordination logistics and should inform strategy and planning
- **Align with national plans.** T1D plans embedded in NCD strategies, to ensure sustainability
- **Show sustainability trajectory.** A plausible pathway to fiscal and institutional sustainability. Detailed financing plans not required.

## PARTNER ENGAGEMENT

- **Coordination over volume.** A well-coordinated ecosystem of partners working across diabetes and NCDs with clear roles outscored a long list of loosely connected partners.
- **Local actors and lived experience.** Meaningful inclusion of local organizations and people living with T1D.
- **Genuine but proportionate.** Partners consulted during EOI development, but extensive formal processes not expected at EOI stage.

\* MoH (or equivalent government authority at national or regional levels) may assign different partners to write different sections of the EOI, but that has no bearing on which partner(s) will receive funds.

ALIGN-T1D is committed to the meaningful engagement of Type 1 communities. All grantees are expected to engage community members in advisory and decision-making processes throughout the full program life-cycle: from strategy through delivery



## Meaningful Community Engagement Principles



**Commit to long-term partnerships**



**Offer responsive and strategic funding**



**Communicate with clarity & consistency**



**Support capacity & inclusive participation**



**Co-create goals, metrics, and reporting frameworks**



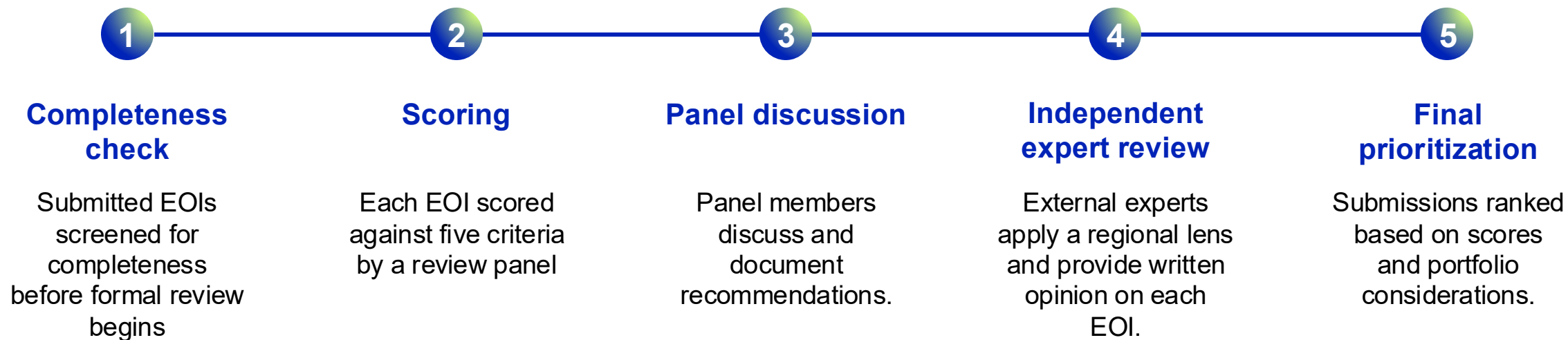
**Proactively seek and respond to feedback**

Countries (or geographies) awarded grants through ALIGN-T1D in this phase will be expected to dedicate a **minimum of 5% of their annual budget to community engagement**

# Content

1. Welcome and objectives
2. Introduction to ALIGN-T1D
3. Overview of the EOI call and eligibility
4. Funding scope
5. What makes a strong EOI
6. Government leadership and partner engagement
- 7. Review and selection process**
8. Submission and timelines
9. Q&A

# Review and Selection Process



## EOIs assessed competitively

Scores provide a structured starting point. Portfolio considerations, such as geographic and country contexts, may be applied after scoring with clear justification.

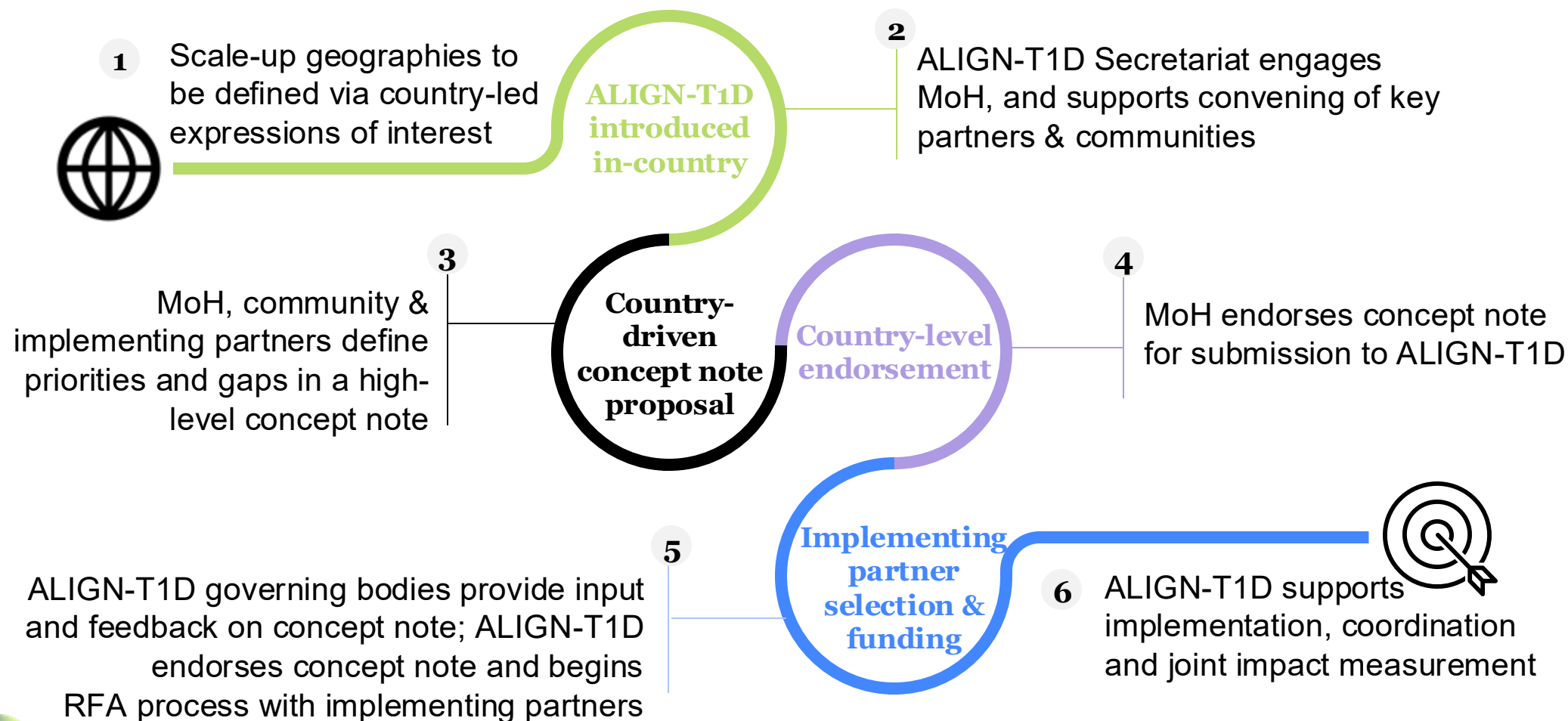
## 3-5 countries will advance\*

Outcomes of review process will be shared with countries. Shortlisted countries will be invited to submit a full proposal

\* Dependent on strength of EOI submissions and available funding.

# Our Process | What Comes After EOI

ALIGN-T1D will support an inclusive, country-driven agenda



# Content

1. Welcome and objectives
2. Introduction to ALIGN-T1D
3. Overview of the EOI call and eligibility
4. Funding scope
5. What makes a strong EOI
6. Government leadership and partner engagement
7. Review and selection process
- 8. Submission and timelines**
9. Q&A

# Submission and Timelines

## HOW TO SUBMIT



### Use the official EOI template

Read and follow the instructions in the template carefully (available on the ALIGN-T1D website)



### Submit by email

To [kcaldwell@breakthrough1d.org](mailto:kcaldwell@breakthrough1d.org), [global@breakthrough1d.org](mailto:global@breakthrough1d.org) and use reference indicated in the EOI call



### One EOI per country, endorsed by MOH

Partners are expected to collaborate in the development of the EOI, but submissions must be by the MOH/ respective State Department

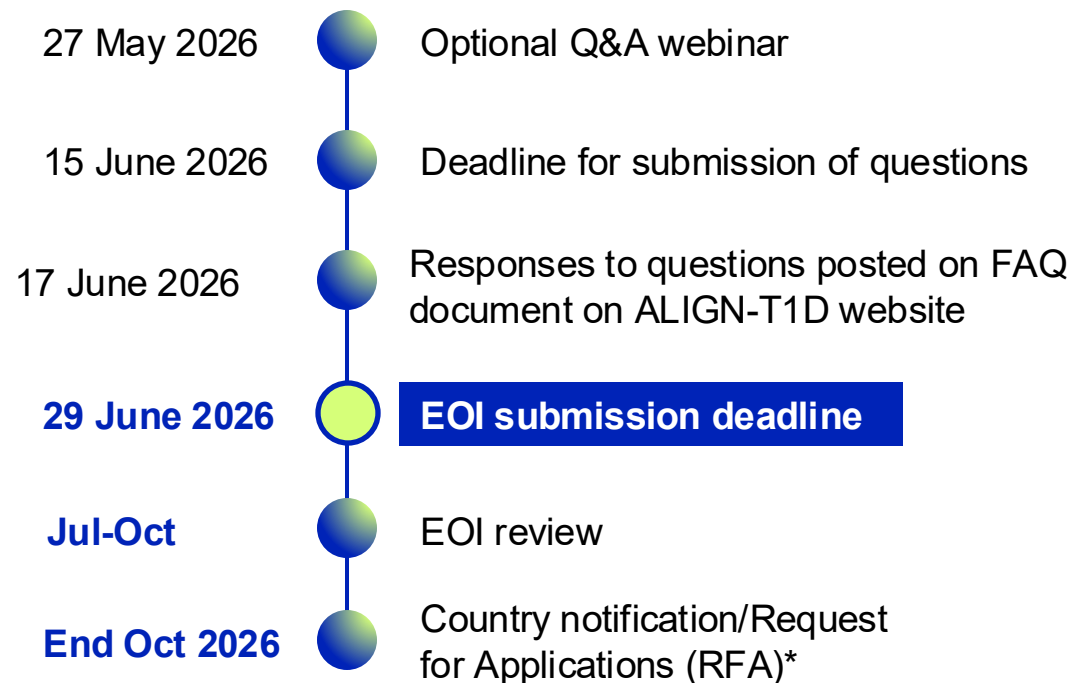


### Questions via email

All questions and responses posted on the ALIGN-T1D website, ensuring equal access to information for all applicants.



## KEY DATES



\*RFA: request for a more detailed country-driven application

# Content

1. Welcome and objectives
2. Introduction to ALIGN-T1D
3. Overview of the EOI call and eligibility
4. Funding scope
5. What makes a strong EOI
6. Government leadership and partner engagement
7. Review and selection process
8. Submission and timelines
- 9. Q&A**

# Q & A

Please submit questions in chat

**THANK YOU!**